



Shortingate Road | Thetford | | IP24 2FU

Shared Ownership £143,000

Resale Shared Ownership two bedroom property provided by Havebury Housing Partnership on the Hopkins Homes development in Thetford. This end-terrace house comes with a fitted kitchen and bathroom, as well as allocated parking for two cars. Price is advertised at 65% ownership, with the option to purchase more available.

- Resale Shared Ownership
- Two Double Bedrooms
- Modern
- Allocated Parking For Two Cars
- End-Terrace
- Price Advertised at a 65% Share, Option to Purchase More Available

Approximate Room Sizes

ENTRANCE HALL

KITCHEN 10' 3" x 7' 2" (3.12m x 2.18m) Appliances Included, free of charge.

LOUNGE/DINER 15' 1" x 13' 4" < 16' 8" (4.6m x 4.06m)

WC

FIRST FLOOR LANDING

BEDROOM ONE 14' 3" x 9' 5" (4.34m x 2.87m)

BEDROOM TWO 11' 2" x 9' 5" < 16' 8" (3.4m x 2.87m)

BATHROOM

OUTSIDE SPACE The rear gardens commence with a patio area and the remainder is grass. Timber shed and fence. Parking to the side for 2 cars.

AGENTS NOTE Full Market Price £220,000

Share 65% - £143,000

Rent £189.03

Service Charge £33.77

Plot 53

Lease Length - 988 years

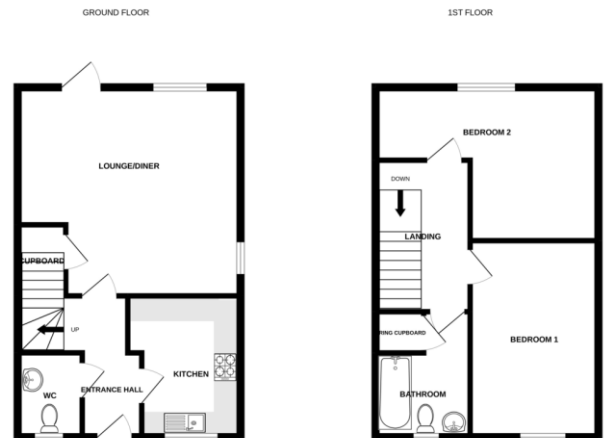
Local Authority – Breckland District Council

Council Tax Band – B

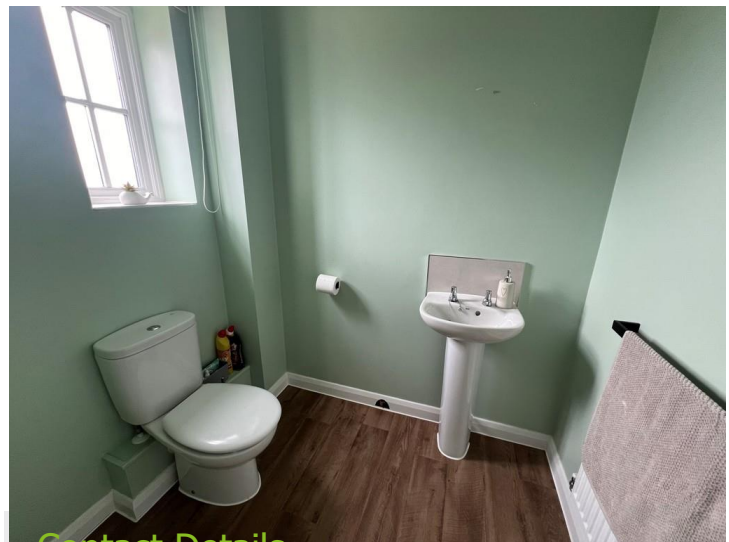
Tenure – Leasehold

Services –

Post Code – IP24 2FU



While every attempt has been made to ensure the accuracy of the floorplans contained herein, measurements of areas, volumes, heights and other figures are approximate and no responsibility is taken for any error, omission or mis-statement. The plans are for illustrative purposes only and should not be used for any other purpose without the prior written consent of the agent. The agent is not responsible for any error or omission. Made with Metreplan 10000



Contact Details

6 The Traverse, Bury St Edmunds, IP33 1BJ

Tel: 01284 769598

Email: burystedmunds@bychoice.co.uk

Energy Efficiency Rating

Score	Energy rating	Current	Potential
92+	A		95   A
81-91	B	83   B	
69-80	C		
55-68	D		
39-54	E		
21-38	F		
1-20	G		

Agents Note: Whilst every care has been taken to prepare these sales particulars, they are for guidance purposes only. All measurements are approximate are for general guidance purposes only and whilst every care has been taken to ensure their accuracy, they should not be relied upon and potential buyers are advised to recheck the measurements

