



Kilby Way | Great Cornard | CO10 0FR

Shared Ownership £85,750

Resale Shared Ownership with Havebury Housing. Situated on the Woodlands Rise development is this 2 bedroom end of terrace shared ownership home. Fitted kitchen and bathroom as well as parking for 1 car and additional visitor parking. (Priced based on a 35% purchase) , higher share options available. Please note, a local connection to Babergh is required through work, residency or immediate family.

- 2 Bedrooms
- New Home
- Fitted Kitchen & Bathroom
- Allocated Parking Space
- Additional Visitor Parking
- Shared Ownership
- Havebury Housing

Approximate Room Sizes

ENTRANCE HALL

GROUND FLOOR WC

KITCHEN 12' 1" x 6' 7" (3.7m x 2.02m)

LOUNGE 15' 8" x 13' 7" (4.79m x 4.15m)

FIRST FLOOR LANDING

BEDROOM 1 13' 7" x 11' 10" (4.15m x 3.63m)

BEDROOM 2 13' 7" x 9' 0" (4.15m x 2.76m)

BATHROOM

OUTSIDE Front and rear gardens. Allocated parking for 1 car and a share of a visitors parking space.

AGENTS NOTE MONTHLY RENT £406.62 BASED ON 35% PURCHASE

MONTHLY SERVICE CHARGE £32.57 PER MONTH

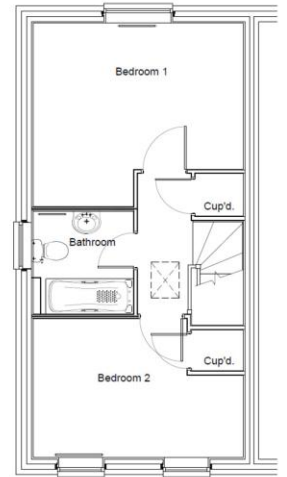
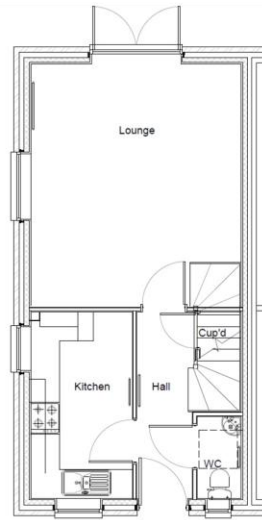
Local Authority – Babergh District Council

Council Tax Band – B

Tenure – Leasehold

Services – Mains gas, water & electric

Post Code – CO10 0FR



Energy Efficiency Rating

| Score | Energy rating | Current | Potential |
|-------|---------------|---------|-----------|
| 92+ | A | | 96 A |
| 81-91 | B | 83 B | |
| 69-80 | C | | |
| 55-68 | D | | |
| 39-54 | E | | |
| 21-38 | F | | |
| 1-20 | G | | |

Contact Details

6 King Street, Sudbury, Suffolk, CO10 2EB

Tel: 01787 468400

Email: sudbury@bychoice.co.uk

Agents Note: Whilst every care has been taken to prepare these sales particulars, they are for guidance purposes only. All measurements are approximate and for general guidance purposes only and whilst every care has been taken to ensure their accuracy, they should not be relied upon and potential buyers are advised to check the measurements.

