

Summary

A well presented 1 bedroom ground floor maisonette boasting a good size living room, double glazed windows and communal gardens. Located in a quiet close in the popular village of Fornham St Martin, this property is highly recommended for viewing.

Description

Approximate Room Sizes

A well presented 1 bedroom ground floor maisonette boasting a good size living room, double glazed windows and communal gardens. Located in a quiet close in the popular village of Fornham St Martin, this property is highly recommended for viewing.

LOCATION Fornham St Martin is located just outside of the market town of Bury St Edmunds and has a regular bus service. The Woolpack Public House is on the main street next to St Martin's church, nearby is All Saints Hotel and also easy access to A14 and Tesco Superstore.

ENTRANCE PORCH Double glazed door into porch

LIVING ROOM 12' 6" x 12' 8" (3.81m x 3.86m)
Double glazed window to front, storage heater

HALLWAY Double doors to storage cupboard which is housing hot water cylinder

BATHROOM Double glazed window to side, panelled bath with shower over, W/C, wash hand basin, extractor fan

KITCHEN 13' 2" x 5' 8" (4.01m x 1.73m) Double glazed window to rear, range of wall and base units with work surfaces over incorporating stainless steel sink with drainer, spaces for oven, fridge/freezer and washer/dryer, part tiled walls

BEDROOM 10' 2" x 8' 11" (3.1m x 2.72m) plus recess Double glazed window to rear, recessed area which is ideal for wardrobes or desk area

OUTSIDE There is a communal garden to the rear of the property which is laid to lawn.

Oak Close also comes with parking spaces for residents.

AGENT NOTES Service charge - £134.34 per month
Length of Lease – 78 years

Additional Information

Local Authority – West Suffolk Council

Council Tax Band – A

Tenure – Leasehold

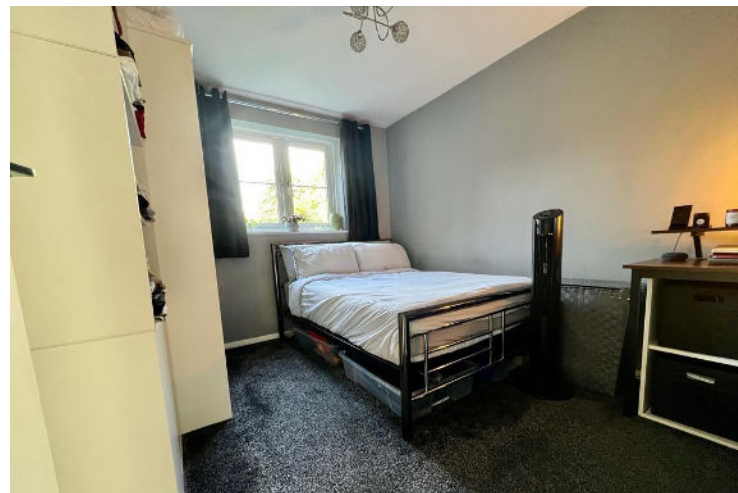
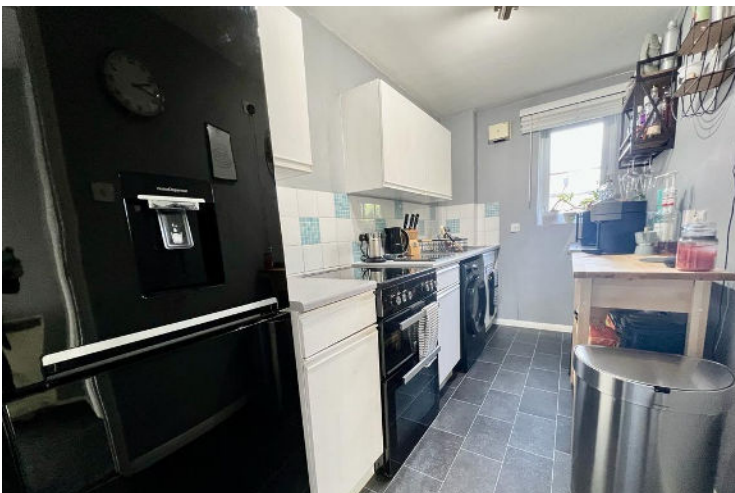
Services – %full_services%

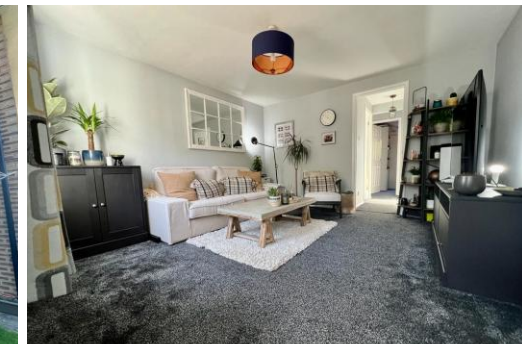
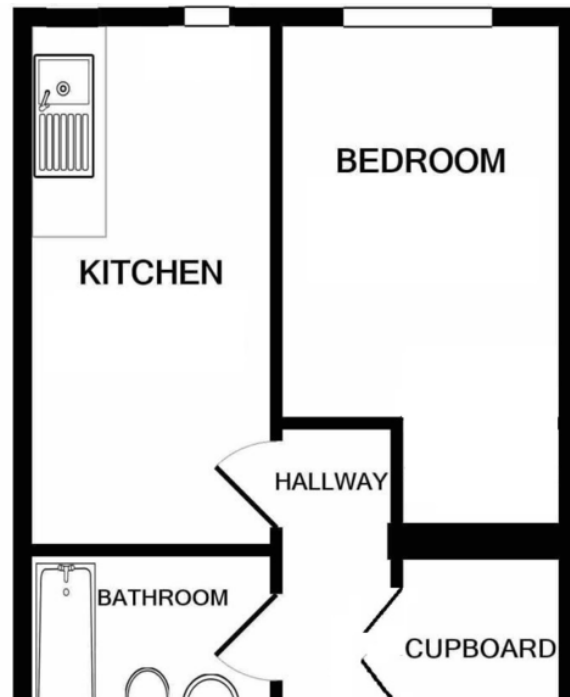
Post Code – IP28 6BY

Viewings by appointment

Bychoice Estate Agents

Tel: 01284 769598





If you would like to speak to one of our mortgage advisors call now – 01284 769598

Your home may be repossessed if you do not keep up repayments on your mortgage.

%epcGraph_c_1_317%



Contact Details
 6 The Traverse, Bury St Edmunds, IP33 1BJ
 Tel: 01284 769598
 Email: burystedmunds@bychoice.co.uk

Agents Note: Whilst every care has been taken to prepare these sales particulars, they are for guidance purposes only. All measurements are approximate and for general guidance purposes only and whilst every care has been taken to ensure their accuracy, they should not be relied upon and potential buyers are advised to recheck the measurements

Oak Close Full Price | Fornham St Martin | IP28 6BY

A well presented 1 bedroom ground floor maisonette boasting a good size living room, double glazed windows and communal gardens. Located in a quiet close in the popular village of Fornham St Martin, this property is highly recommended for viewing.

£145,000

- Ideal First Time Buy
- Ground Floor Maisonette
- Communal Gardens
- Seller Found!
- Well Presented Home
- Village Location
- Great Access to A14