



Foxburrow Road | Ipswich | IP8 3FZ

Shared Ownership £124,000

Brand New two bedroom property available with Havebury Housing Partnership. This beautiful home benefits from spacious living, modern kitchen, ground floor cloakroom and off road parking. Price is based on 40% share. Share options available from 25%-75%.

- Shared Ownership Home
- New Build
- 2 Bedrooms
- Allocated Parking
- Garden
- Ground Floor Cloakroom

Approximate Room Sizes

ENTRANCE HALL

KITCHEN Double glazed window to front, range of wall and base units with stainless steel sink with drainer, oven with gas hob and extractor over, spaces for appliances

CLOAKROOM W/C, wash hand basin

LIVING ROOM Double glazed window to rear and door leading to the garden

FIRST FLOOR LANDING

BEDROOM ONE Two double glazed windows to front, built in cupboard

BEDROOM TWO Double glazed window to rear

BATHROOM W/C, pedestal wash hand basin

OUTSIDE Rear garden commences with paved patio area, shed in garden.

Two parking spaces at front of property

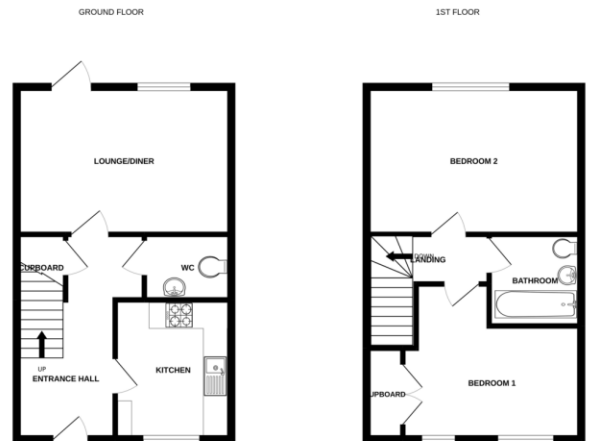
Local Authority – Babergh District Council

Council Tax Band –

Tenure – Leasehold

Services – Gas Central Heating

Post Code – IP8 3FZ



Whilst every attempt has been made to ensure the accuracy of the floorplan contained here, measurements of plans, windows, doors and any other items are approximate and no responsibility is taken for any error or omission in the drawings. The plan is for illustrative purposes only and should not be used for any purpose other than guidance. The layout, position and appearance of items have not been tested and no guarantee is to be given as to their operation or otherwise at the time.
Made with Design-CAD



Contact Details

6 The Traverse, Bury St Edmunds, IP33 1BJ

Tel: 01284 769598

Email: burystedmunds@bychoice.co.uk

Agents Note: Whilst every care has been taken to prepare these sales particulars, they are for guidance purposes only. All measurements are approximate and for general guidance purposes only and whilst every care has been taken to ensure their accuracy, they should not be relied upon and potential buyers are advised to check the measurements.

