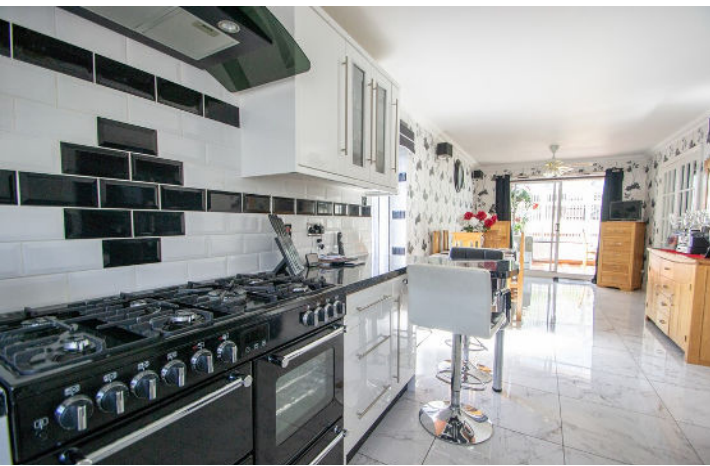




Hanchett End | Haverhill, Suffolk, CB9 7GE



Features

- FOUR BEDROOMS
- THREE BATHROOMS
- DOUBLE GARAGE
- SOUGHT AFTER HANCHETT END
- BEAUTIFULLY KEPT & EXPANSIVE GARDENS
- AMPLE LIVING SPACE
- PLENTY OF PARKING

A stunning four-bedroom home located in the picturesque parish of Withersfield, situated on the outskirts of the market town of Haverhill. Nestled within one of the area's most coveted cul-de-sac locations, this beautifully presented property boasts three bathrooms, double garage & stunning gardens.



THE PROPERTY

Welcome to this stunning four-bedroom home located in the picturesque parish of Withersfield, situated on the outskirts of the market town of Haverhill. Nestled within one of the area's most coveted cul-de-sac locations, this beautifully presented property exudes charm and elegance from the moment you arrive.

Approaching the home, you'll be greeted by a generous block-paved driveway providing ample off-road parking, bordered by a meticulously kept raised front garden featuring a delightful seating area and a pathway leading to the front door. The driveway extends to an integrated double garage with an electric roll-up door, offering both convenience and security for your vehicles. For added accessibility, there's step-free entry via a convenient side access.

Step inside, and you'll immediately appreciate the spaciousness and warmth of this inviting home. The kitchen/diner is a focal point, boasting an excellent range of units with sleek worktops, perfect for culinary enthusiasts and entertaining guests. The cozy lounge features a charming fireplace, while a conservatory seamlessly connects the indoors to the outdoors, providing a tranquil retreat to enjoy the surrounding views.

Venture further into the home, and you'll find the bedrooms. The first is a generous double adorned with built-in wardrobes, followed by another sizable bedroom which could easily serve as a study or guest room. These bedrooms are serviced by a beautifully appointed shower room. Ascend to the next level to discover a large double bedroom complete with built-in wardrobes and a luxurious ensuite bathroom.

Returning to the entrance hall, ascend the stairs to unveil another extremely spacious double bedroom with a walk-in storage space and an ensuite shower room, offering privacy and comfort for residents and guests alike.

Step outside into the expansive garden, predominantly laid to lawn and surrounded by lush greenery, providing a serene backdrop for outdoor gatherings and relaxation. Secluded patio areas, raised decking, a timber shed, and a summer house offer ample opportunities to enjoy the outdoors in style.

To top it all off, the property benefits from solar panels, contributing to energy efficiency and sustainability. Don't miss out on the chance to make this exquisite property your new home.





LOCATION

The property is located towards the end of a sought after cul-de-sac, offering a high degree of seclusion whilst maintaining excellent links to a wide range of amenities. The property is situated less than 1/2 mile to Sainsburys superstore, as well as a bus stop giving direct access to Cambridge. Approximately 16 miles from the centre of the historic university city of Cambridge, as well a fantastic rail links including Cambridge (16 miles), Whittlesford (13 miles) & Audley End (13 miles). Haverhill town centre is less than 2 miles away, with a range of supermarkets, shops, gyms, restaurants, leisure centre & cinema.

SITTING ROOM

16' 4" x 14' 3" (5.0m x 4.36m)

CONSERVATORY

KITCHEN/DINER

28' 11" x 9' 5" (8.82m x 2.89m)

BEDROOM TWO

12' 9" x 12' 9" (3.89m x 3.89m)

ENSUITE

BEDROOM THREE

11' 11" x 10' 4" (3.64m x 3.17m)

BEDROOM FOUR/STUDY

9' 7" x 7' 4" (2.93m x 2.24m)

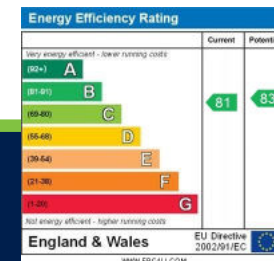
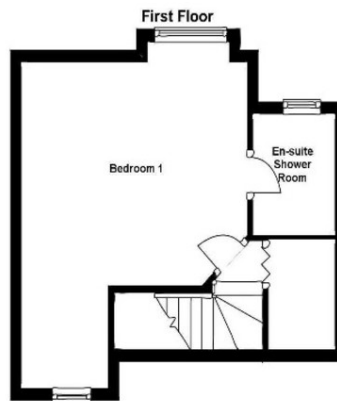
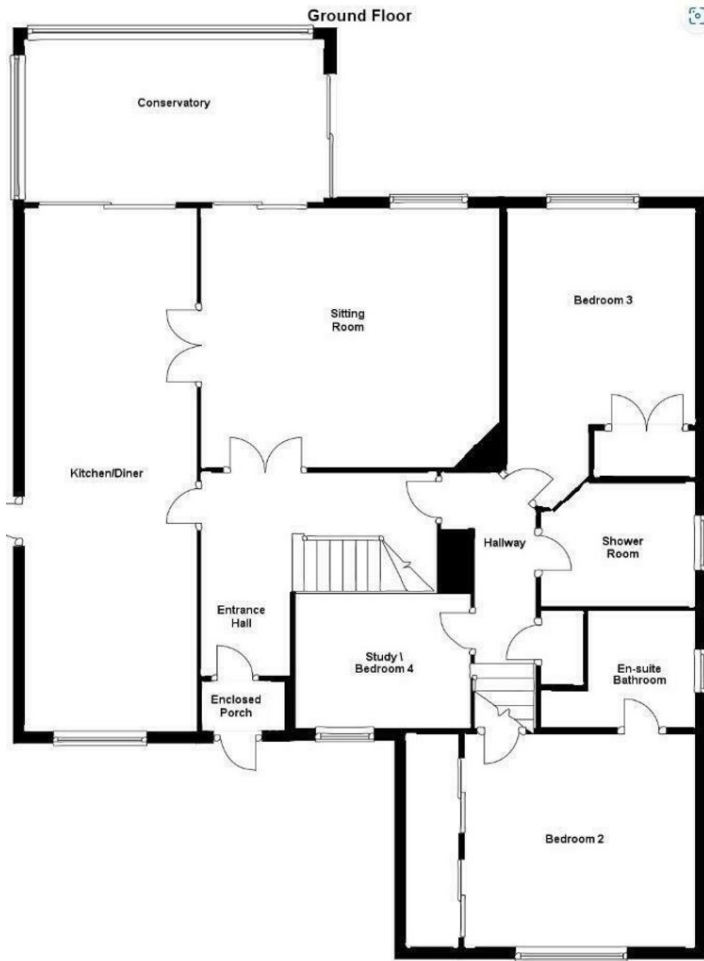
SHOWER ROOM

BEDROOM ONE

13' 6" x 12' 0" (4.13m x 3.68m)

ENSUITE





Bychoice
ESTATE AGENTS

Haverhill Office
27b High Street, Haverhill, Suffolk, CB9 8AD | Tel: 01440 768919
E-mail: haverhill@bychoice.co.uk
bychoice.co.uk

Agents Note: Whilst every care has been taken to prepare these sales particulars, they are for guidance purposes only. All measurements are approximate are for general guidance purposes only and whilst every care has been taken to ensure their accuracy, they should not be relied upon and potential buyers are advised to recheck the measurements B2304



