



Bedford Court | Haverhill | CB9 8JP

Double furnished room to let in house share on the edge of the Clements estate, room includes double bed, wardrobe, chest of drawers and bed side cabinet, shared kitchen and bathroom, council tax and water are included in the rent , AVAILABLE EARLY FEB.

£85 pw

- Double rooms available for single occupancy
- Clements estate
- Furnished rooms
- Kitchen
- No Housing Benefits

Approximate Room Sizes

ENTRANCE HALL Under stair storage & stairs to first floor.

15' 9" x 13' 1" (4.8m x 3.99m) Double glazed window to rear, radiator, laminate flooring.

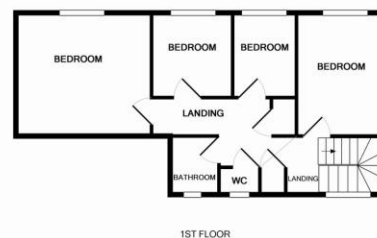
KITCHEN/DINER 13' 6" x 9' 11" (4.11m x 3.02m) Fitted kitchen with a range of base & eye level cupboards & drawers with inset sink & drainer, roll top work surface, space for washing machine, electric oven & fridge/freezer. Window to front, patio doors to rear, radiator.

Local Authority –

Council Tax Band – B

Post Code – CB9 8JP

Please Note – No Pets, No smokers, no hb



Whilst every attempt has been made to ensure the accuracy of the floor plan contained here, measurements of doors, windows, rooms and any other items are approximate and no responsibility is taken for any error, omission, or mis-statement. This plan is for illustrative purposes only and should be used as such by any prospective purchaser. The services, systems and appliances shown have not been tested and no guarantee as to their operability or efficiency can be given.
Made with Metropix (2014)

Agents Note *(All fees are inclusive of VAT)*

- Excellent references will be required by anyone renting through Bychoice
- A minimum deposit of one & a half months rent is required (may be increased in certain circumstances)
- Referencing fees £95 per applicant or guarantor
- A check out fee of £20 is charged at the end of your tenancy per property



Contact Details

27b High Street, Haverhill, Suffolk, CB9 8AD

Tel: 01440 768919

Email: haverhill@bychoice.co.uk

Agents Note: Whilst every care has been taken to prepare these sales particulars, they are for guidance purposes only. All measurements are approximate are for general guidance purposes only and whilst every care has been taken to ensure their accuracy, they should not be relied upon and potential buyers are advised to recheck the measurements