



Market Hill | Clare | CO10 8NN

£950 pcm

Available Now Unfurnished - A stunning luxury first floor apartment located in the centre of the historic town. Benefits Include fitted kitchen with integrated appliances, bathroom with roll top bath and separate shower, large double bedroom and dual aspect sitting room.

- First Floor Apartment
- Fitted Kitchen
- Bathroom With Separate Shower
- Dual Aspect Sitting Room
- Large Double Bedroom
- Central Location

Approximate Room Sizes

LOUNGE 15' 1" x 15' 0" (4.6m x 4.58m)

Feature fireplace, window to side aspect, power points.

BEDROOM 11' 11" x 11' 5" (3.64m x 3.5m)

Power points. Window to side aspect.

BATHROOM 7' 10" x 7' 1" (2.4m x 2.17m)

Roll top bath. Lower level flush WC. Separate shower unit. Tiled throughout. Velux skylight.

KITCHEN/DINER 12' 2" x 10' 11" (3.71m x 3.34m)

A range of base and wall mounted units with complimentary work surfaces. Integrated washer/dryer. Integrated fridge and dishwasher. Window to side aspect. Power points.

AGENTS NOTE

No pets.

Agents Note *(All fees are inclusive of VAT)*

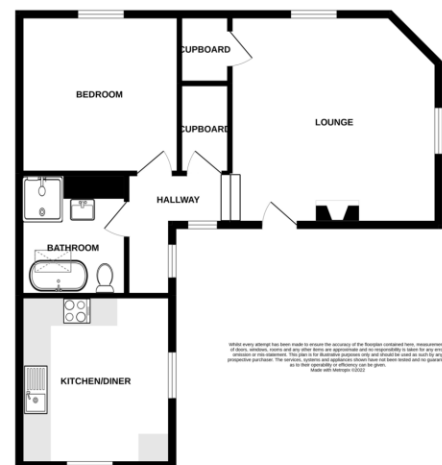
- Excellent references will be required by anyone renting through Bychoice
- A deposit equal to five weeks rent will be required
- A holding deposit equal to one weeks rent will be required on application
- Tenants will be required to provide their own contents insurance

Local Authority – Babergh District Council

Council Tax Band – A

Post Code – CO10 8NN

GROUND FLOOR



Contact Details

6 King Street, Sudbury, Suffolk, CO10 2EB

Tel: 01787 468408

Email: lettings@bychoice.co.uk

Energy Efficiency Rating		
	Current	Potential
Very energy efficient - lower running costs		
(92+) A		
(81-91) B		
(69-80) C		
(55-68) D	62	74
(39-54) E		
(21-38) F		
(1-20) G		
Not energy efficient - higher running costs		
England & Wales	EU Directive 2002/91/EC	

WWW.EPC4U.COM



Agents Note: Whilst every care has been taken to prepare these sales particulars, they are for guidance purposes only. All measurements are approximate and for general guidance purposes only and whilst every care has been taken to ensure their accuracy, they should not be relied upon and potential buyers are advised to recheck the measurements.