



£1,825

Slough Farm, Slough Farm Lane



THE PROPERTY

Welcome to this spacious and characterful three-bedroom semi-detached farmhouse, situated in a peaceful rural setting and offering generous accommodation throughout. Located on a working farm, the property enjoys beautiful countryside surroundings while still providing practical and versatile living space ideal for day-to-day family life.

Upon entering, you are welcomed into a spacious entrance hall leading through to a bright and comfortable living room, alongside a separate dining room providing an ideal setting for family meals or entertaining. The property also benefits from a well-proportioned kitchen with pantry, as well as a separate study offering an excellent work-from-home space. In addition, there is a ground floor cloakroom and multiple storage areas throughout the property.

Upstairs, there are three good-sized bedrooms, all offering comfortable accommodation and flexibility for a range of uses. The first floor is further complemented by a family bathroom and additional built-in storage.

Externally, the farmhouse enjoys generous outdoor space along with off-road parking and a double garage, all set within a picturesque countryside setting.

THE LOCATION

Situated just outside the sought-after village of Acton, the property enjoys a peaceful rural location while remaining within easy reach of nearby amenities.

Acton offers a village feel with a strong sense of community, while the nearby market town of Sudbury provides a wider range of shops, supermarkets, schools, and leisure facilities. The location also benefits from good access to surrounding areas, making it ideal for both work and day-to-day living.

AGENTS NOTE

Please note, the property is located on a working farm and there may therefore be associated vehicle movement and farming activity nearby.

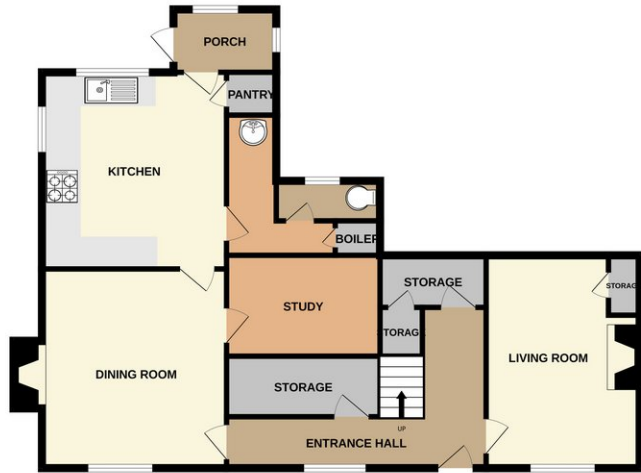
As the property is supplied via a private borehole, a monthly water charge will be payable to the landlord in addition to the rent. This will be calculated based on the number of occupants residing at the property.







GROUND FLOOR
965 sq.ft. (89.6 sq.m.) approx.



1ST FLOOR
793 sq.ft. (73.7 sq.m.) approx.



TOTAL FLOOR AREA : 1757 sq.ft. (163.3 sq.m.) approx.
Whilst every attempt has been made to ensure the accuracy of the floorplan contained here, measurements of doors, windows, rooms and any other items are approximate and no responsibility is taken for any error, omission or mis-statement. This plan is for illustrative purposes only and should be used as such by any prospective purchaser. The services, systems and appliances shown have not been tested and no guarantee as to their operability or efficiency can be given.
Made with Metropix ©2023

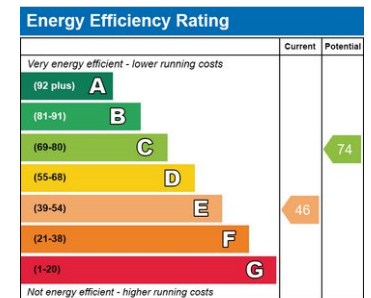
AGENTS NOTE

As the property is supplied via a private borehole, a monthly water charge will be payable to the landlord in addition to the rent. This will be calculated based on the number of occupants residing at the property.

Council - Babergh District Council

Mobile Coverage - Voice & Data likely with EE, Three, O2 & Vodaphone. (Ofcom data)

Utilities – Mains Electric, Oil Central Heating, Sewage Treatment Plant & Water is supplied via a Borehole



Sudbury Office
01787 468400
sudbury@bychoice.co.uk
6 King Street, Sudbury, Suffolk, CO10 2EB

Agents Note: Whilst every care has been taken to prepare these particulars, they are for guidance and are for general guidance purposes only and whilst every care has been taken to ensure their accuracy, they should not be relied upon.

Bychoice
ESTATE AGENTS